

# WAHUDA TOOLS

## User Manual

Read this manual before using machine to avoid serious injury and damage

# 70200 DS-WHD

## 12" Benchttop Drum Sander



WAHUDA  
TOOLS



70200 OS DEMO



For technical support, email [techservices@wahudatools.com](mailto:techservices@wahudatools.com) or call at **877-568-8879**  
VER. 10.18.24

# TABLE OF CONTENTS

## INTRODUCTION

SECTION 1	Warranty	-----	3
SECTION 2	Product Specifications	-----	4
SECTION 3	In The Box	-----	4
SECTION 4	Feature Identification	-----	5
SECTION 5	General Safety	-----	6
SECTION 6	Product Safety	-----	9
SECTION 7	Parts Diagram & List	-----	13

## INTRODUCTION

This user manual is intended for use by anyone working with this machine. It should be kept available for immediate reference so that all operations can be performed with maximum efficiency and safety. Do not attempt to perform maintenance or operate this machine until you have read and understand the information contained in this manual. The drawings, illustrations, photographs, and specifications in this user manual represent your machine at time of print. However, changes may be made to your machine or this manual at any time with no obligation to WAHUDA.

# WARRANTY

## 2 - YEAR LIMITED WARRANTY

WAHUDA warrants its machinery to be free of defects in workmanship and materials for a period of two (2) years from the date of the original purchase by the original owner. This warranty applies to products sold in United States only. The warranty does not apply to any product used for professional or commercial production purposes nor for industrial or educational applications. Such cases are covered by our 1 year Limited Warranty with the Conditions and Exceptions.

Warranty does not include failures, breakage or defects deemed after inspection by an Authorized Service Center or our agent to have been directly or indirectly caused by or resulting from improper use, lack of or improper maintenance, misuse or abuse, negligence, accidents, damage in handling or transport, or normal wear and tear of any part or component. Examples are consumables such as inserts and knives or wear items like drive belts, bearings or brushes. Additionally, warranty is void if repairs or alterations are made to the machine by an unauthorized service center without the direct consent of WAHUDA.

To file a claim of warranty, call toll free 877-568-8879 or email [techservices@wahudatools.com](mailto:techservices@wahudatools.com) . Warranty applies to the original buyer only and cannot be transferred. Your machines date of purchase and serial number have already been registered with WAHUDA when shipped. If you purchased your machine from one of our authorized dealers, please go online at [www.wahudatools.com](http://www.wahudatools.com) and register your machine online. Thus, you will only need to provide your full name when contacting WAHUDA.

The defective units should be returned Freight prepaid to WAHUDA's Authorized Service Center for inspection. If the warranty claim is considered to be invalid due to exclusions listed above, WAHUDA will at your direction dispose of or return the product. In the event you choose to have the product returned you will be responsible for the handling and shipping cost of the return.

WAHUDA furnishes the above warranties in lieu of all other warranties, express or implied. WAHUDA shall not be liable for any special, indirect, incidental, punitive or consequential damages, including without limitation to loss of profits arising from or related to the warranty, the breach of any agreement or warranty, or the operation or use of its machinery, including without limitation damages arising from damage to fixtures, tools, equipment, parts or materials, direct or indirect loss caused by any other part, loss of revenue or profits, financing or interest charges, and claims by and third person, whether or not notice of such possible damages has been given to WAHUDA. Not Responsible for damages of any kind for any delay by or failure of WAHUDA to perform its obligations under this agreement or claims made a subject of a legal proceeding against WAHUDA more than one (1) year after such cause of action first arose.

The validity, construction and performance of this Warranty and any sale of machinery by WAHUDA shall be governed by the law of the State of Tennessee, without regard to conflicts of law's provisions of any jurisdiction. Any action related in any way to any alleged or actual offer, acceptance or sale by WAHUDA or any claim related to the performance of and agreement including without limitation this Warranty, shall take place in the federal or state courts in Shelby County, Tennessee.

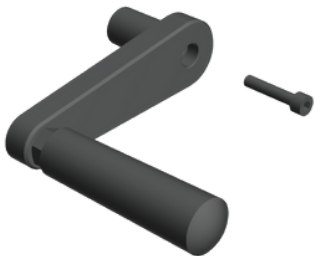
WAHUDA reserves the right to change the specifications of its machines without prior notice.

## PRODUCT SPECIFICATIONS

Motor power input Motor	110V, 60 Hz, 1PH, AC, 11 Amp
Grits of Sanding Belt, Included	#120
Grits of Sanding Belt, Optional	#60, #80 , #100,* #120, #150 , #180 , #220
Shipping Weight	101 lbs
Net Weight	87 lbs
Assembled Dimensions	33" L x 17.5" W x 15" H
Shipping Dimensions	37" L x 20.5" W x 17" H
Recommended 20 amp circuit	

## IN THE BOX

Handle with Cap Screw



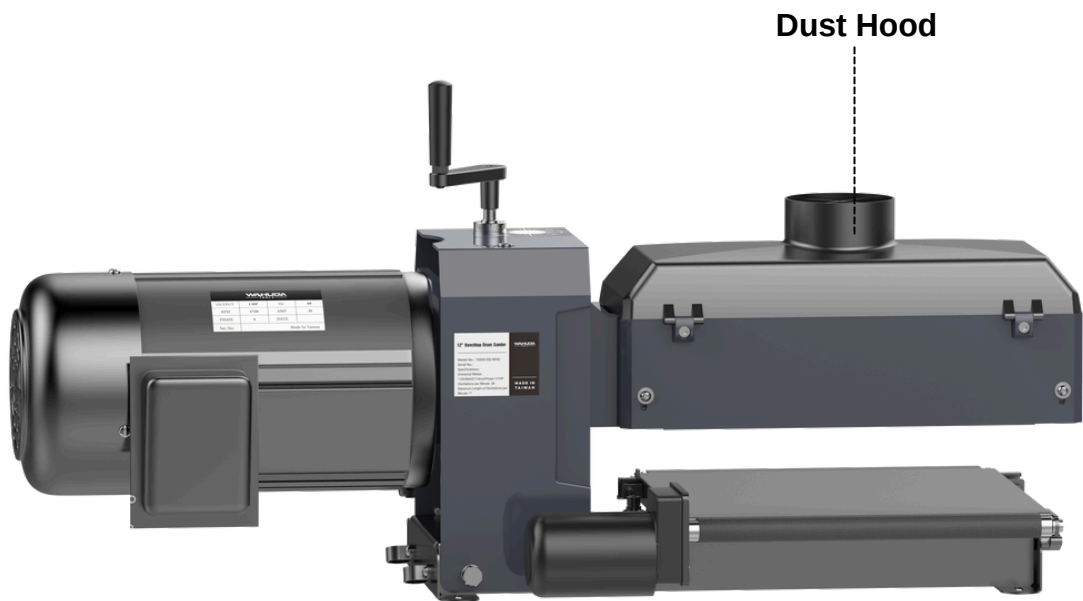
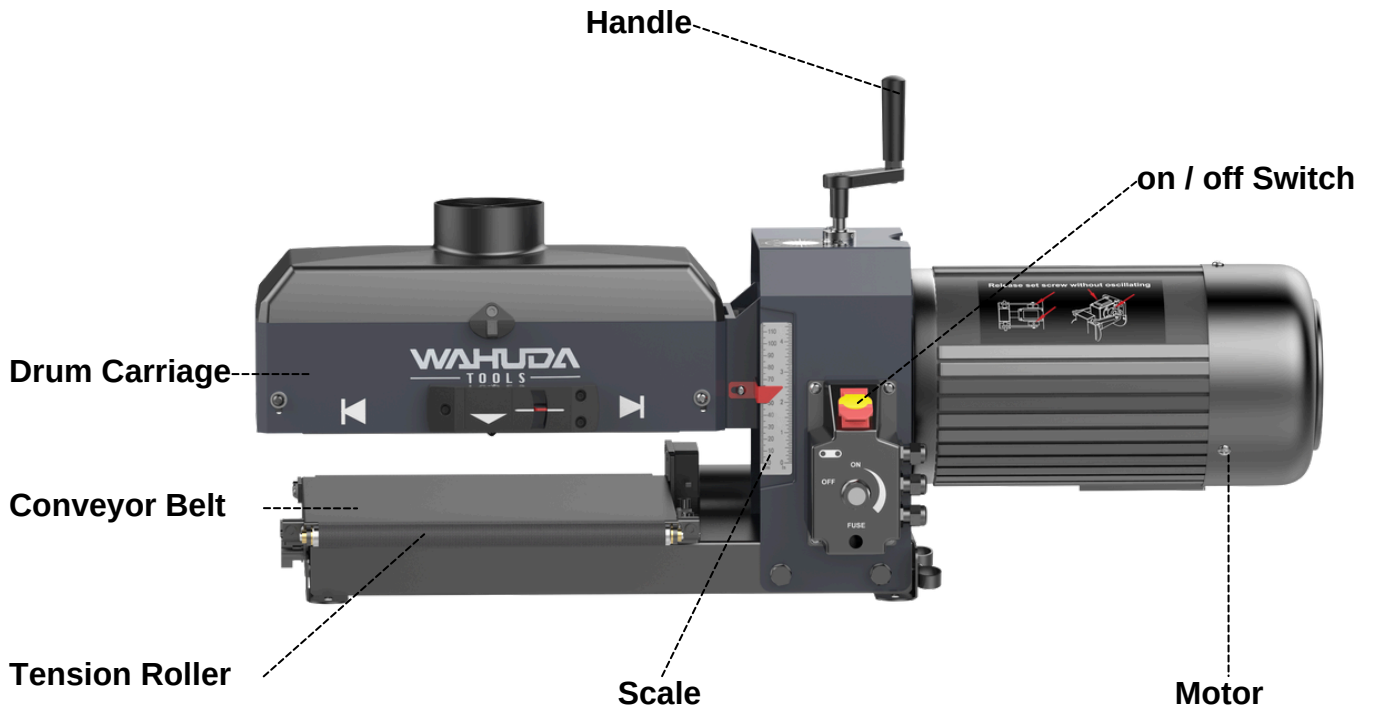
T Torx Handle



4 mm allen key



# FEATURE IDENTIFICATION



# GENERAL SAFETY

**NOTE:** The **WARNING!** and **CAUTION!** symbols indicate a potentially hazardous situation which, if not avoided, COULD result in death or serious injury. READ THIS MANUAL completely before assembling and operating this machine.

**WARNING!** TO AVOID serious injury, death, or damage to the machine, please read, understand, and follow, all Safety and Operating Instructions before assembling and operating this machine. This manual is not totally comprehensive. It does not and cannot convey every possible safety and operational problem which may arise while using this machine. The manual will cover many of the basic and specific safety procedures needed in an industrial environment.

All federal and state laws, and any regulations having jurisdiction covering the safety requirements for use of this machine, take precedence over the statements in this manual. Users of this machine must adhere to all such regulations.

**WARNING!** Exposure to the dust created by power sanding, sawing, grinding, drilling and other construction activities may cause serious and permanent respiratory or other injury, including silicosis (a serious lung disease), cancer, and death. Avoid breathing the dust, and avoid prolonged contact with dust. The dust may contain chemicals known to the State of California to cause cancer, birth defects or other reproductive harm.

Some examples of these chemicals are:

- Lead from lead-based paints.
- Crystalline silica from bricks, cement and other masonry products.
- Arsenic and chromium from chemically-treated lumber.

Always operate tool in well ventilated area and provide for proper dust removal. Use a dust collection system along with an air filtration system whenever possible. Always use properly fitting NIOSH/OSHA approved respiratory protection appropriate for the dust exposure, and wash exposed areas with soap and water.

**WARNING!** ALWAYS wear eye protection. Any machine can throw debris into the eyes during operations, which could cause severe and permanent eye damage. Everyday eyeglasses are NOT safety glasses. ALWAYS wear Safety Goggles (that comply with ANSI standard Z87.1) when operating power tools.

**WARNING!** ALWAYS wear hearing protection. Plain cotton is not an acceptable protective device. Hearing equipment should comply with ANSI S3.19 Standards.

**WARNING!** ALWAYS wear a NIOSH/OSHA approved dust mask to prevent inhaling dangerous dust or airborne particles.

ALWAYS keep the work area clean, well lit, and organized. DO NOT work in an area that has slippery floor surfaces from debris, grease, and wax.

## GENERAL SAFETY (cont.)

**CAUTION!** ALWAYS unplug the machine from the electrical receptacle when making adjustments, changing parts or performing any maintenance.

AVOID ACCIDENTAL STARTING. Make sure that the power switch is in the "OFF" position before plugging in the power cord to the electrical receptacle.

**WARNING!** AVOID a dangerous working environment. DO NOT use electrical tools in a damp environment or expose them to rain or moisture.

**WARNING!** CHILDPROOF THE WORKSHOP AREA by removing switch keys, unplugging tools from the electrical receptacles, and using padlocks.

**CAUTION!** DO NOT use electrical tools in the presence of flammable liquids or gasses.

DO NOT FORCE the machine to perform an operation for which it was not designed. It will do a safer and higher quality job by only performing operations for which the machine was intended.

**WARNING!** DO NOT stand on a machine. Serious injury could result if it tips over or you accidentally contact any moving part.

DO NOT store anything above or near the machine.

**WARNING!** DO NOT operate any machine or tool if under the influence of drugs, alcohol, or medication.

EACH AND EVERY time, check for damaged parts prior to using any machine. Carefully check all guards to see that they operate properly, are not damaged, and perform their intended functions.

Check for alignment, binding or breakage of all moving parts. Any guard or other part that is damaged should be immediately repaired or replaced.

**WARNING!** Ground all machines. If any machine is supplied with a 3-prong plug, it must be plugged into a 3-contact electrical receptacle. The third prong is used to ground the tool and provide protection against accidental electric shock. DO NOT remove the third prong.

**CAUTION!** Keep visitors and children away from any machine. DO NOT permit people to be in the immediate work area, especially when the machine is operating.  
KEEP protective guards in place and in working order.

## GENERAL SAFETY (cont.)

**CAUTION!** MAINTAIN your balance. DO NOT extend yourself over the tool. Wear oil resistant rubber soled shoes. Keep floor clear of debris, grease, and wax.

MAINTAIN all machines with care. ALWAYS KEEP machine clean and in good working order. KEEP all blades and tool bits sharp.

NEVER leave a machine running, unattended. Turn the power switch to the OFF position. DO NOT leave the machine until it has come to a complete stop.

REMOVE ALL MAINTENANCE TOOLS from the immediate area prior to turning the machine ON.

**WARNING!** STAY ALERT, watch what you are doing, and use common sense when operating any machine. DO NOT operate any machine tool while tired or under the influence of drugs, alcohol, or medication. A moment of inattention while operating power tools may result in serious personal injury.

**WARNING!** USE ONLY recommended accessories. Use of incorrect or improper accessories could cause serious injury to the operator and cause damage to the machine. If in doubt, DO NOT use it.

THE USE of extension cords is not recommended for 230V equipment. It is better to arrange the placement of your equipment and the installed wiring to eliminate the need for an extension cord. If an extension cord is necessary, refer to the chart in the Grounding Instructions section to determine the minimum gauge for the extension cord. The extension cord must also contain a ground wire and plug pin.

**CAUTION!** Wear proper clothing, DO NOT wear loose clothing, gloves, neckties, or jewelry. These items can get caught in the machine during operations and pull the operator into the moving parts. Users must wear a protective cover on their hair, if the hair is long, to prevent it from contacting any moving parts.

SAVE these instructions and refer to them frequently and use them to instruct other users.

**NOTE:** Information regarding the safe and proper operation of this tool is also available from the following sources:

Power Tool Institute  
1300 Summer Avenue  
Cleveland, OH 44115-2851  
[www.powertoolinstitute.org](http://www.powertoolinstitute.org)

American National Standards Institute  
23 West 43rd Street, 4th Floor  
New York, NY 10036  
[www.ansi.org](http://www.ansi.org)

National Safety Council  
1121 Spring Lake Drive  
Itasca, IL 60143-3201

ANSI 01.1 Safety Requirements for  
Woodworking Machines and the  
U.S. Department of Labor Relations  
[www.osha.gov](http://www.osha.gov)



# PRODUCT SAFETY

1. Serious personal injury may occur if normal safety precautions are overlooked or ignored. Accidents are frequently caused by lack of familiarity or failure to pay attention. Obtain advice from supervisor, instructor, or another qualified individual who is familiar with this machine and its operations.

Every work area is different. Always consider safety first, as it applies to your work area. Use this

2. machine with respect and caution. Failure to do so could result in serious personal injury and damage to the machine.

Prevent electrical shock. Follow all electrical and safety codes, including the National Electrical Code

3. (NEC) and the Occupational Safety and Health Regulations (OSHA). All electrical connections and wiring should be made by qualified personnel only

**WARNING!** TO REDUCE the risk of electrical shock. DO NOT use this machine outdoors. DO NOT

4. expose to rain. Store indoors in a dry area.

STOP using this machine, if at any time you experience difficulties in performing any operation.

5. Contact your supervisor, instructor or machine service center immediately.

Safety decals are on this machine to warn and direct you to how to protector yourself or visitors from

6. personal injury. These decals MUST be maintained so that they are legible.

DO NOT leave the unit plugged into the electrical outlet. Unplug the unit from the outlet when not in

7. use and before servicing, performing maintenance tasks, or cleaning.

**WARNING!** DO NOT handle the plug or machine with wet hands

8. USE only accessories as described in this manual and recommended by WAHUDA.

9. DO NOT pull the jointer by the power cord. NEVER allow the power cord to come in contact with

10. sharp edges, hot surfaces, oil or grease.

ALWAYS turn the power switch "OFF" before unplugging the machine. DO NOT unplug the machine

11. by pulling on the power cord. ALWAYS grasp the plug, not the cord.

REPLACE a damaged cord immediately. DO NOT use a damaged cord or plug.

12. DO NOT use the machine as a toy. DO NOT use near or around children.

13. ENSURE that the machine sits firmly before using. If the machine wobbles or is unstable, correct the

14. problem by attaching to a bench top prior to operation.

This machine is designed to process wood ONLY.

15. INSPECT all stock before beginning operations ensuring that there are no foreign objects embedded

16. in the wood, loose knots, or knots that may become loose during operation.

**WARNING!** DO NOT attempt to remove jams until power is disconnected and all moving parts have

17. come to a complete stop.

## PRODUCT SAFETY (cont.)

18. MAKE SURE that there is adequate operating space before turning machine on.
19. If the work you are doing is liable to generate flying grit, dust or chips, wear the appropriate safety clothing, protective eye wear (Such as goggles or face mask).
20. If the work operation appears to be excessively noisy, wear hearing protection.
21. If you have long hair, wearing a cap, safety helmet, hairnet, or even a sweatband, will minimize the possibility of your hair being caught up in the rotating parts of the tool.
22. Snag hazards, such as rings, watches, etc, should also be removed.  
Consideration to wearing non-slip footwear should be given.
23. DO NOT work with cutting tools of any description if you are tired, your attention is not focused, or you are being distracted. A deep cut, lost finger, or worse, is not worth it.
24. ALWAYS USE COMMON SENSE when operating any machinery.

# GROUNDING INSTRUCTIONS

**WARNING!** This machine **MUST BE GROUNDED** while in use to protect the operator from electric shock. In the event of a malfunction or breakdown, **GROUNDING** provides the path of least resistance for electric current and reduces the risk of electric shock. The plug **MUST** be plugged into a matching electrical receptacle that is properly installed and grounded in accordance with **ALL** local codes and ordinances.

If a plug is provided with your machine **DO NOT** modify the plug. If it will not fit your electrical receptacle, have a qualified electrician install the proper connections to meet all electrical codes local and state. **ALL** connections must also adhere to **NEC** and **OSHA** mandates.

**WARNING!** **IMPROPER ELECTRICAL CONNECTION** of the equipment-grounding conductor can result in risk of electric shock. The conductor with the green insulation (with or without yellow stripes) is the equipment-grounding conductor. **DO NOT** connect the equipment-grounding conductor to a live terminal if repair or replacement of the electric cord or plug is necessary.

Check with a qualified electrician or service personnel if you do not completely understand the grounding instructions, or if you are not sure the tool is properly grounded.

**WARNING!** Electrocutation or fire could result if this machine is not grounded properly or if the electrical configuration does not comply with local and state electrical codes.

**MAKE CERTAIN** the machine is disconnected from power source before starting any electrical work. **MAKE SURE** the circuit breaker does not exceed the rating of the plug and receptacle.

The motor supplied with your machine is a 115 volt, 60 hertz, single phase motor. Never connect the green or ground wire to a live terminal. A machine with a 115 volt plug should only be connected to an outlet having the same configuration as the plug.

**WARNING!** To reduce the risk of fire or electrical shock, use the proper gauge of extension cord. When using an extension cord, be sure to use one heavy enough to carry the current your machine will draw.

The smaller the gauge-number, the larger the diameter of the extension cord is. If in doubt of the proper size of an extension cord, use a shorter and thicker cord. An undersized cord will cause a drop in line voltage resulting in a loss of power and overheating.

**CAUTION!** **USE ONLY** a 3-wire extension cord that has a 3-prong grounding plug and a 3-pole receptacle that accepts the machine's plug. If you are using an extension cord outdoors, be sure it is marked with the suffix "W-A" ("W" in Canada) to indicate that it is acceptable for outdoor use.

## GROUNDING INSTRUCTIONS (cont.)

Make certain the extension cord is properly sized, and in good electrical condition. Always replace a worn or damaged extension cord immediately or have it repaired by a qualified person before using it.

Protect your extension cords from sharp objects, excessive heat, and damp or wet areas.

MINIMUM RECOMMENDED GAUGE FOR EXTENSION CORDS (AWG)				
115 VOLT OPERATION ONLY				
	25' LONG	50' LONG	100' LONG	150' LONG
0 to 6 Amps	18 AWG	16 AWG	16 AWG	14 AWG
6 to 10 Amps	18 AWG	18 AWG	14 AWG	12 AWG
10 to 12 Amps	16 AWG	16 AWG	14 AWG	12 AWG

## UNPACKING & INVENTORY

Check shipping carton and machine for damage before unpacking. Carefully remove packaging materials, parts and machine from shipping carton. Always check for and remove protective shipping materials around motors and moving parts. Lay out all parts on a clean work surface.

Please keep all packaging materials until the machine is properly running and all items have been accounted for. Also, please dispose of all packaging materials responsibly.

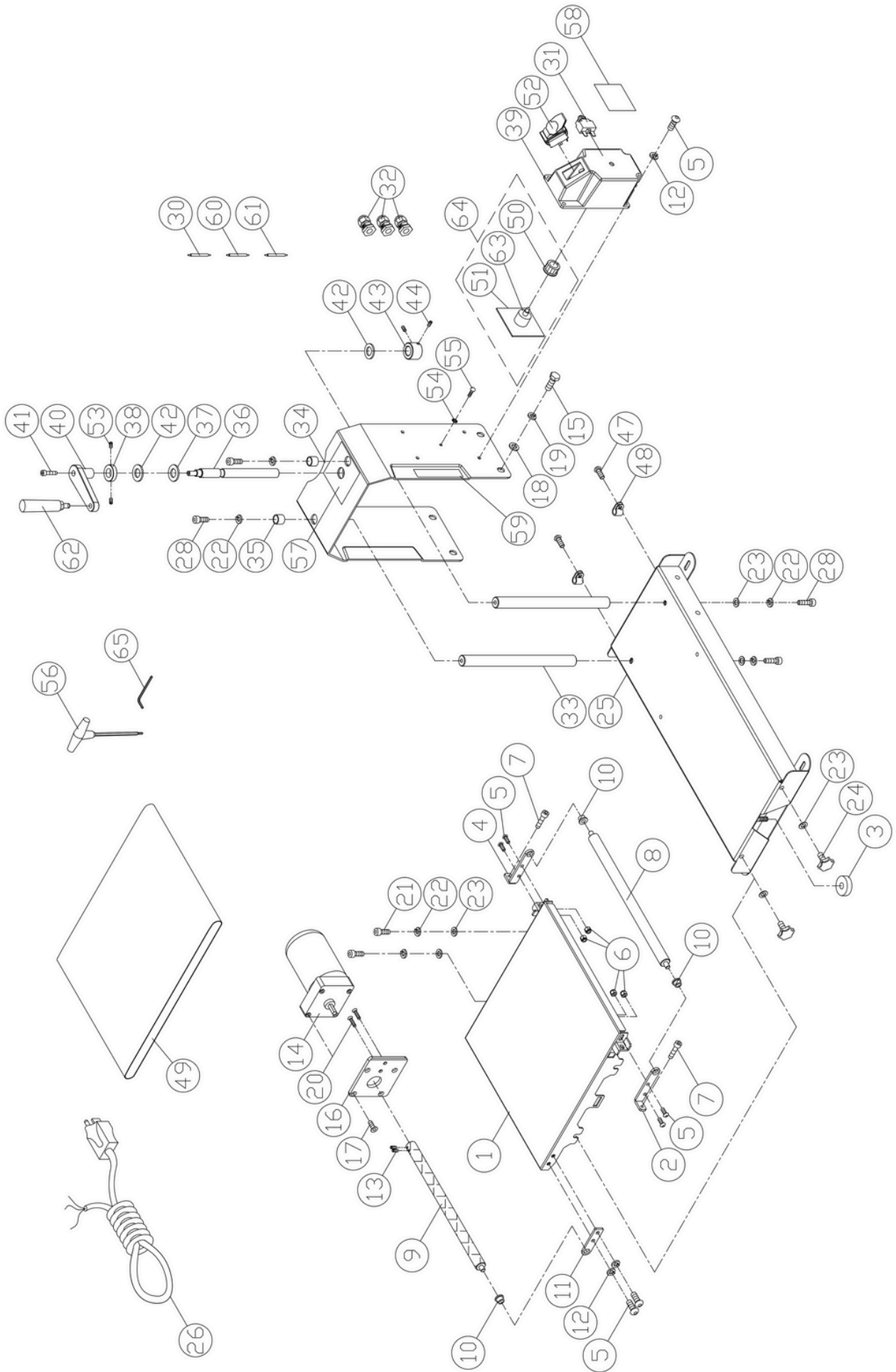
**NOTE: Some parts pictured may already be installed on your machine at the factory.**

Go through the entire manual before contacting WAHUDA.

Compare the items to inventory figures and verify that all items are accounted for. If any parts are missing, do not attempt to power on the machine.

**For missing parts, or shipping damage, contact WAHUDA at [techservices@wahudatools.com](mailto:techservices@wahudatools.com) or call 877-568-8879.**

# PARTS DIAGRAM



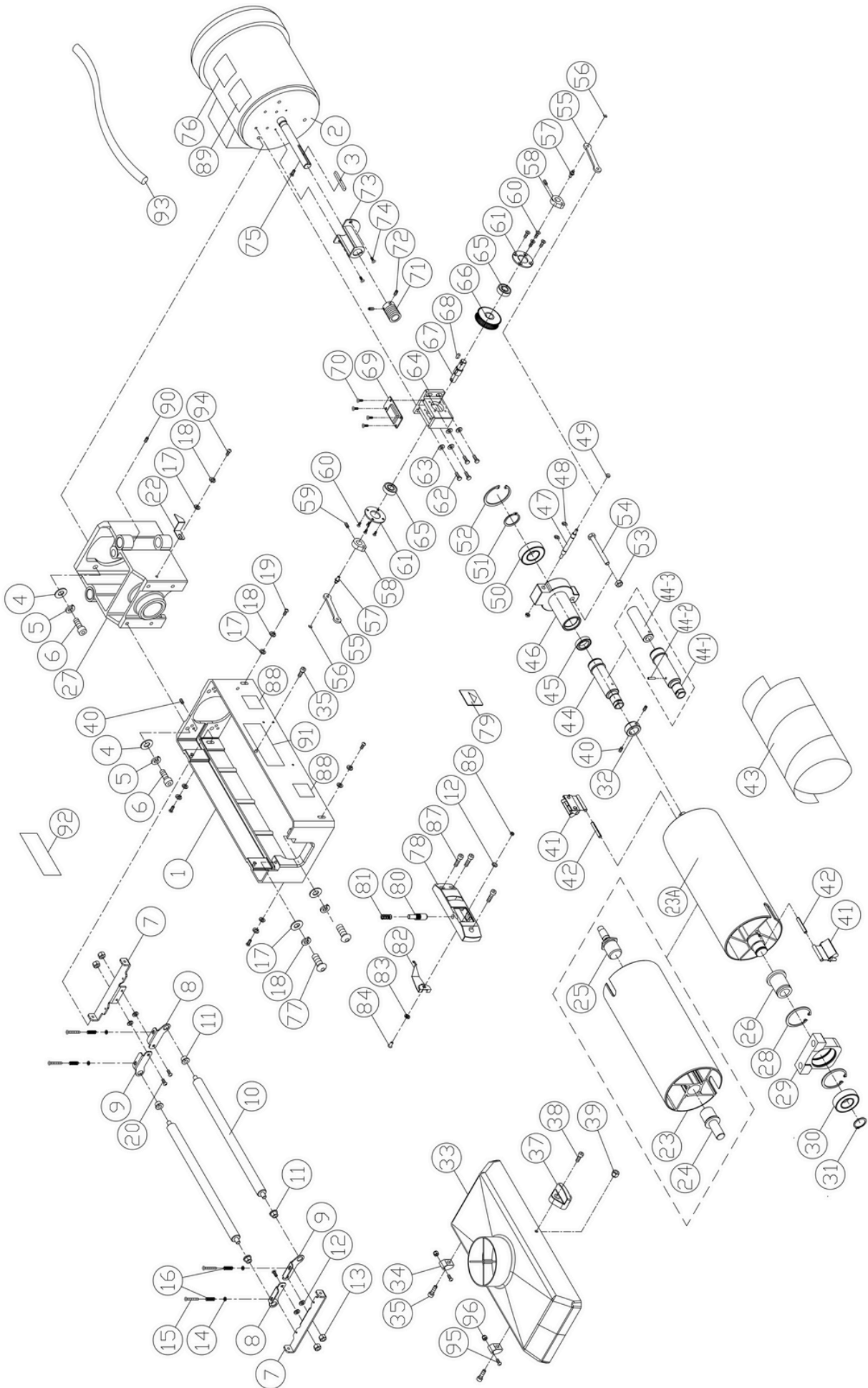
# PART LIST

PART NO.	DESCRIPTION	SPECIFICATION	QTY
70200 – A01	Conveyor Table		1
70200 – A02	Left Slide Bracket		1
70200 – A03	Adjustment Block		1
70200 – A04	Right Slide Bracket		1
70200 – A05	Socket Head Button Screw	M6x20	10
70200 – A06	Nylon Nut	M6	4
70200 – A07	Socket Head Cap Screw	M6x45	2
70200 – A08	Driven Roller		1
70200 – A09	Drive Roller		1
70200 – A10	Oilite Bushing		3
70200 – A11	Drive Roller Bracket		1
70200 – A12	Lock Washer		6
70200 – A13	Set Screws	M5x5	2
70200 – A14	Motor		1
70200 – A15	Hex Screw		4
70200 – A16	Belt Motor Plate		1
70200 – A17	Socket Head Flat Screw	#10-32UNFx1/2"	4
70200 – A18	Flat Washer	M10	4
70200 – A19	Lock Washer	M10	4
70200 – A20	Socket Head Flat Screw	M6x35	2
70200 – A21	Socket Head Cap Screw	M8x16	2
70200 – A22	Lock Washer	M8	6
70200 – A23	Flat Washer	M8	6
70200 – A24	Handle		2
70200 – A25	Base		1
70200 – A26	Power Cable		1
70200 – A28	Socket Head Cap Screw	M8x20	4
70200 – A30	Connection Cable		1
70200 – A31	Overload Protector		1
70200 – A32	Strain Relief	M16	3
70200 – A33	Guide Bar		2
70200 – A34	Motor Shroud		1
70200 – A35	Spacer		2
70200 – A36	Height Adjusting Screw		1
70200 – A37	Oilite Washer		1
70200 – A38	Collar		1
70200 – A39	Control Box		1
70200 – A40	Handle		1
70200 – A41	Socket Head Cap Screw	M5x25	1
70200 – A42	Plastic Washer		2
70200 – A43	Collar		1
70200 – A44	Set Screws	M6*8	2
70200 – A47	Socket Head Button Screw	M5x10	2
70200 – A48	Cord Snap Ring	ACC-6	2
70200 – A49	Conveyor Belt	300x826mm	1

# PART LIST

<b>PART NO.</b>	<b>DESCRIPTION</b>	<b>SPECIFICATION</b>	<b>QTY</b>
70200 – A50	Knob		1
70200 – A51	Circuit Board		1
70200 – A52	Switch		1
70200 – A53	Set Screws	M4x12	2
70200 – A54	External Tooth Washer	M5	1
70200 – A55	Pan Screw	M5x10	1
70200 – A56	T-Torx Handle		1
70200 – A57	Rotary Label		1
70200 – A58	Speed Label		1
70200 – A59	Scale Label		1
70200 – A60	Wire		1
70200 – A61	Wire		1
70200 – A62	Tailstock Handwheel Handle		1
70200 – A63	VR Variable Resistor		1
70200 – A64	Control Group		
70200 – A65	Allen Key	4MM	1

# PARTS DIAGRAM





# PART LIST

PART NO.	DESCRIPTION	SPECIFICATION	QTY
70200 – B01	Drum Carriage		1
70200 – B02	Motor		1
70200 – B03	Key	5x5x50	1
70200 – B04	Flat Washer	M8	7
70200 – B05	Lock Washer	M8	7
70200 – B06	Socket Head Cap Screw	M8x30	7
70200 – B07	Tension Roller Fixed Bracket		2
70200 – B08	Left Suspension Bracket		2
70200 – B09	Right Suspension Bracket		2
70200 – B10	Tension Roller		2
70200 – B11	Oilite Bushing		4
70200 – B12	Flat Washer	M5-D14x1.2T	5
70200 – B13	Nut	M5	4
70200 – B14	Flat Washer	M4-D8x1T	4
70200 – B15	Round Head Phillips Screw	M4x40	4
70200 – B16	Spring		4
70200 – B17	Flat Washer	M6	7
70200 – B18	Lock Washer	M6	7
70200 – B19	Socket Head Button Screw	M6x20	4
70200 – B20	Socket Head Button Screw	M5x10	4
70200 – B22	Pointer		1
70200 – B23A	Drum Set		
70200 – B23	Drum		1
70200 – B24	Left Spindle		1
70200 – B25	Right Spindle		1
70200 – B26	Slide Bush		1
70200 – B27	Base 2		1
70200 – B28	C-Retainer Ring	C-52	2
70200 – B29	Bearing Housing		1
70200 – B30	Bearing	6205VV	1
70200 – B31	C-Ring	S-25	1
70200 – B32	Bush		1
70200 – B33	Dust Hood		1
70200 – B34	Drum Carriage Hinge		2
70200 – B35	Socket Head Cap Screw	M6x12	3
70200 – B37	Knob		1
70200 – B38	Socket Head Cap Screw	M6x16	1
70200 – B39	Nylon Nut	M6	1
70200 – B40	Set Screw	M6*6	6
70200 – B41	Clip		2
70200 – B42	Spring Pin	ψ6*10mm	2
70200 – B43	Abrasive		1
70200 – B44	Spindle Bushing A'ssy		1
70200 – B44-1	Spindle		1
70200 – B44-2	Pin	ψ4*28	1

# PART LIST

PART NO.	DESCRIPTION	SPECIFICATION	QTY
70200 – B44-3	Spindle Bushing		1
70200 – B45	Bearing	6804LLB	1
70200 – B46	Spindle Base		1
70200 – B47	Connecting Rod Axle		1
70200 – B48	E-Ring	ETW-6	2
70200 – B49	Nylon Nut	M5	2
70200 – B50	Bearing	6006LLB	1
70200 – B51	C-Ring	S-30	1
70200 – B52	Inner C-Ring	C-55	1
70200 – B53	Nut	M8	1
70200 – B54	Hex Screw	M8x75	1
70200 – B55	Connection Rod		2
70200 – B56	E-ring	ETW-4	2
70200 – B57	Crank Axle		2
70200 – B58	Crank		2
70200 – B59	Set Screw	M5*8	2
70200 – B60	Flat Head Cap Screw	M4x6	8
70200 – B61	Bearing Gland		2
70200 – B62	Hex Screw	M6x16	4
70200 – B63	Flat Washer	M6	4
70200 – B64	Worm Wheel Frame		1
70200 – B65	Bearing	6001	2
70200 – B66	Worm Wheel		1
70200 – B67	Worm Wheel Spindle		1
70200 – B68	Key	4x4x10	1
70200 – B69	Cover		1
70200 – B70	Pan Screw	M4x6	4
70200 – B71	Worm Gear		1
70200 – B72	Set Screw	M6*5	2
70200 – B73	Cover for Worm Gear		1
70200 – B74	Big Pan Screw	M4x8	2
70200 – B75	Pan Screw	M4x12	1
70200 – B76	Lable-Motor		1
70200 – B77	Socket Head Button Screw	M6x30	2
70200 – B78	Cutting Depth Gauge		1
70200 – B79	Arrow Plate		1
70200 – B80	Shaft		1
70200 – B81	Spring		1
70200 – B82	Pointer		1
70200 – B83	Spacer		1
70200 – B84	Socket Round Head Screw	M4x12	1
70200 – B86	Nylon Nut		1
70200 – B87	Socket Head Cap Screw	M4x12	3
70200 – B88	Swing Range Label		2
70200 – B89	Cancel Swing Sticker		1

# PART LIST

<b>PART NO.</b>	<b>DESCRIPTION</b>	<b>SPECIFICATION</b>	<b>QTY</b>
70200 – B90	Set Screw	M6x6	1
70200 – B91	Logo Label		1
70200 – B92	Nameplate		1
70200 – B93	Motor Cable		1
70200 – B94	Socket Head Button Screw	M6x10	1
70200 – B95	Cap Screw	M3x40	2
70200 – B96	Nylon Nut	M3	2